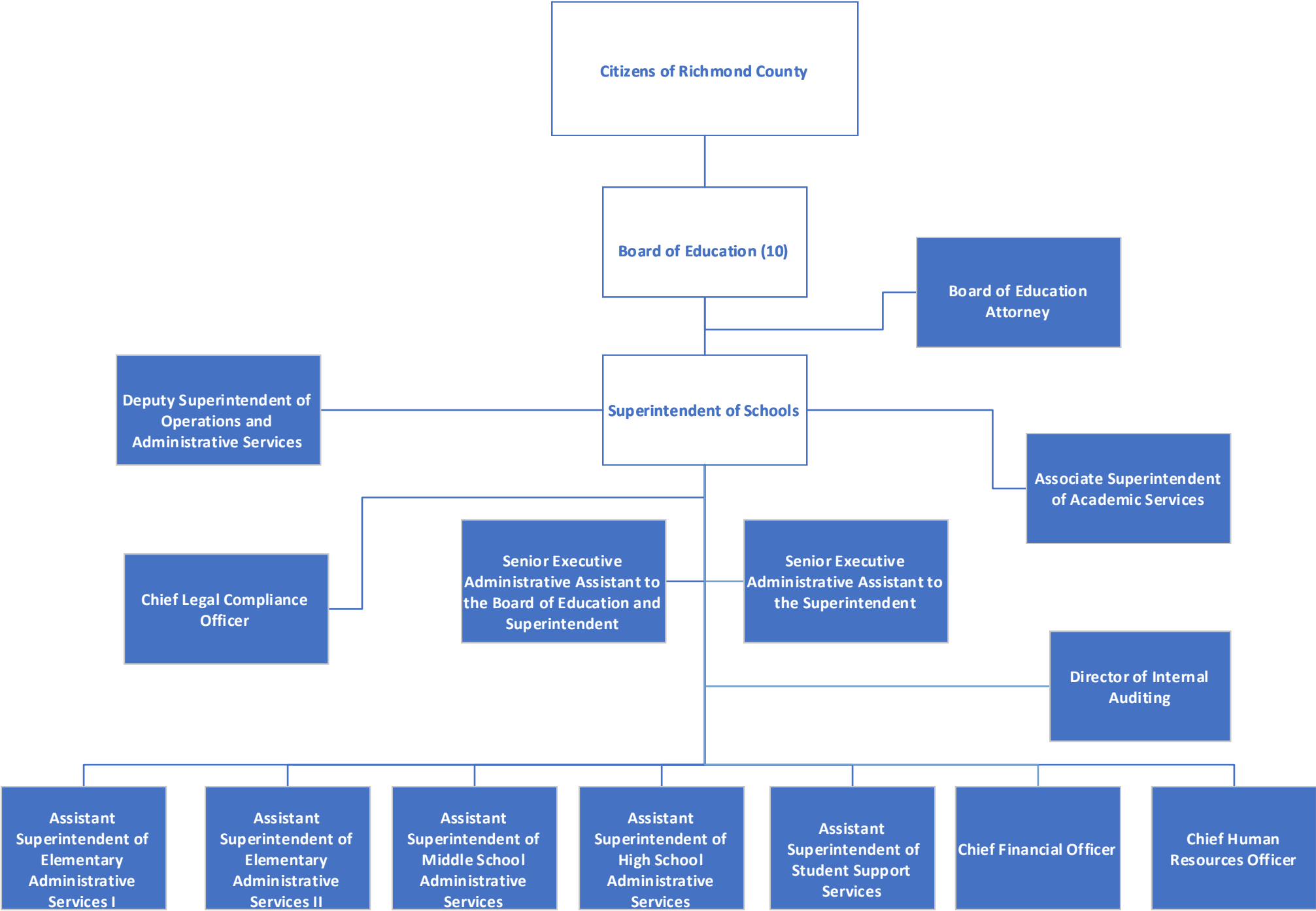
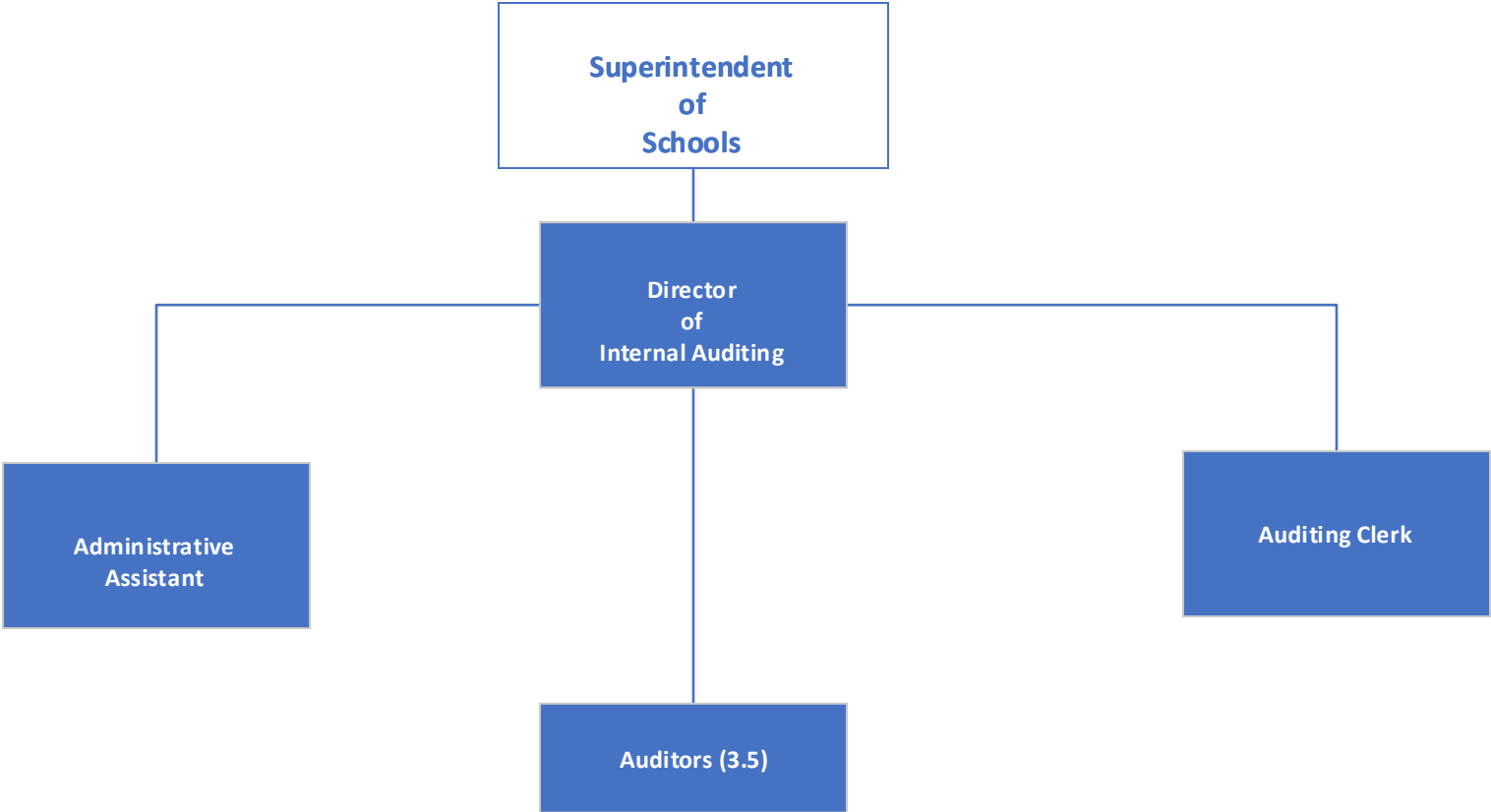
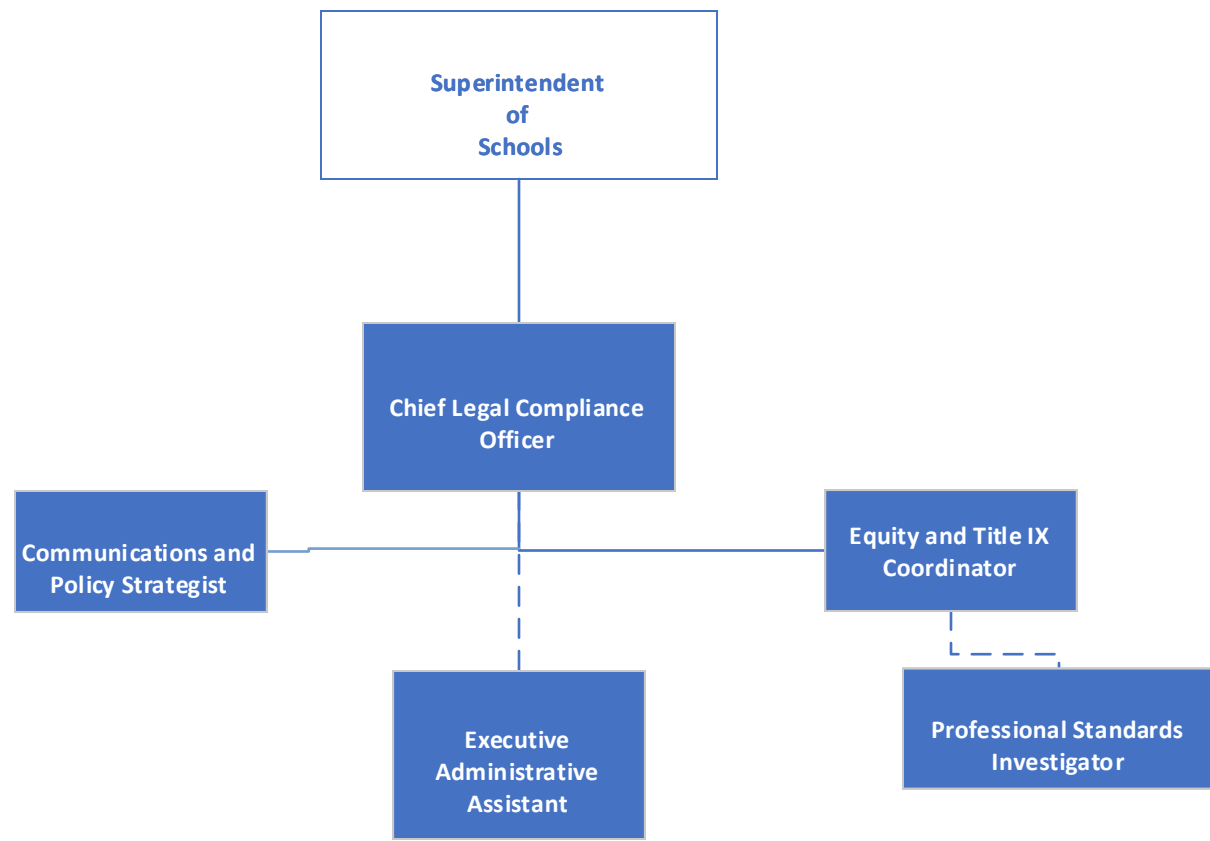


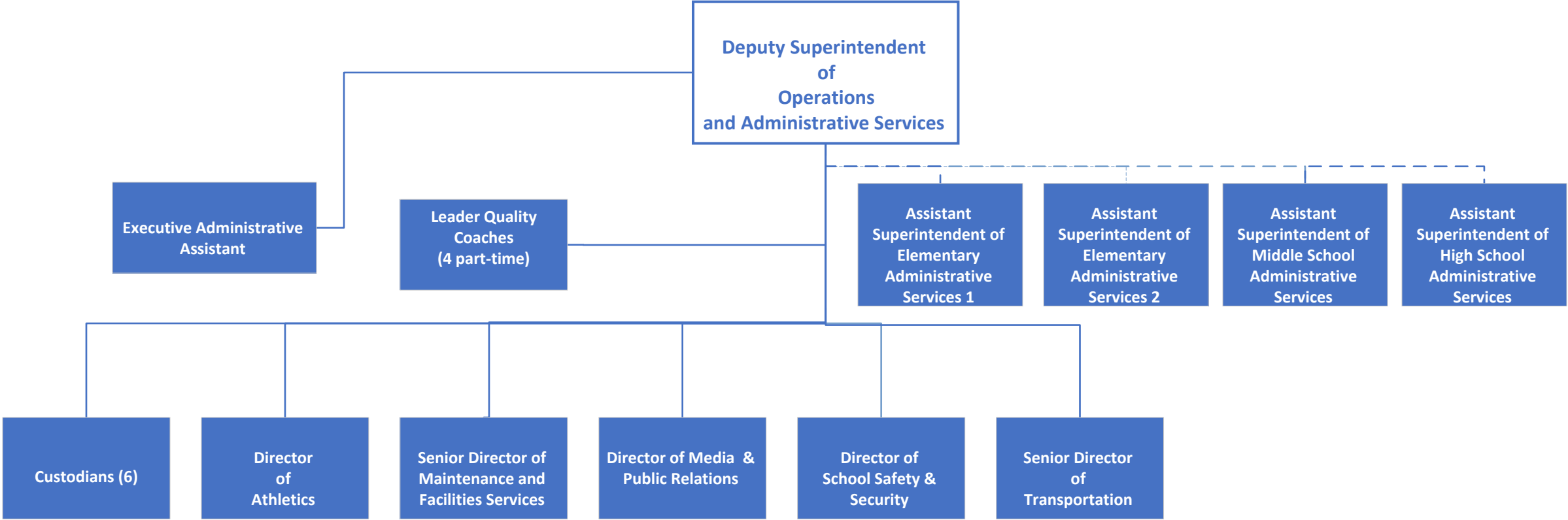
Approved FY25 Organizational Charts Table of Contents

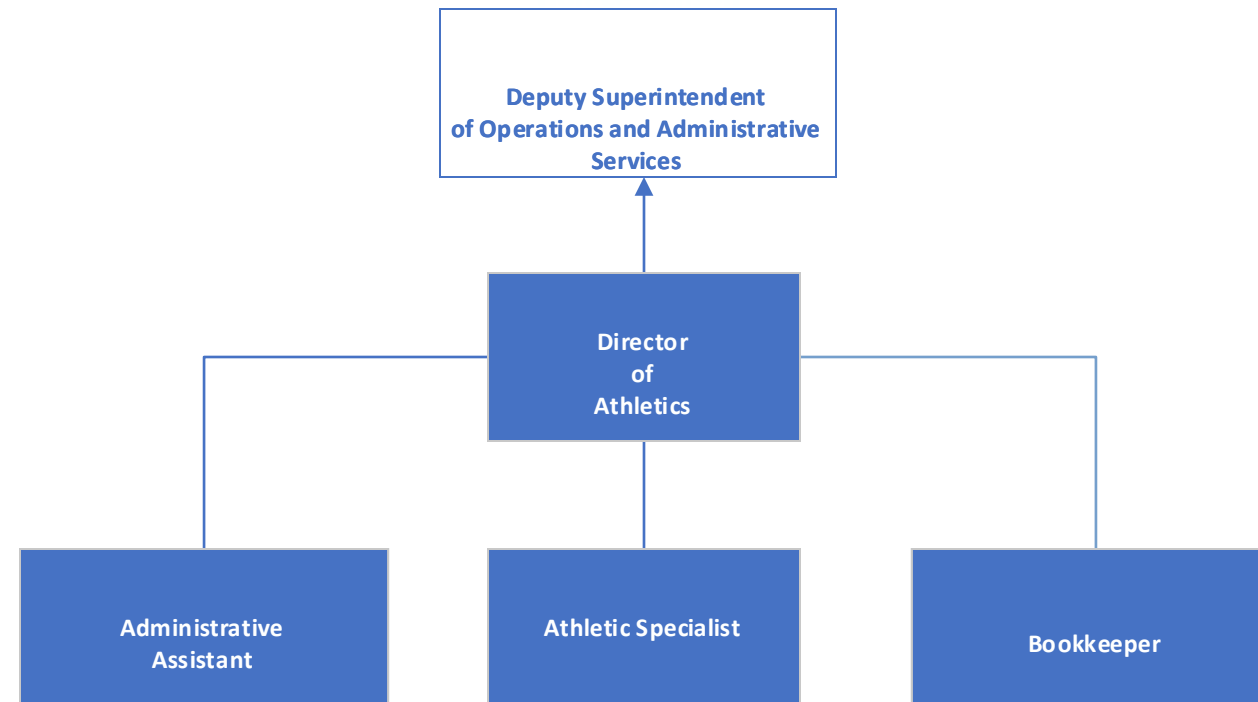
1. Board of Education - Administration Organizational Chart
2. Internal Auditing
3. Policy and Legal Compliance
4. Deputy Superintendent of Operations and Administrative Services
5. Athletics
6. Maintenance and Facilities Services
7. Public Relations
8. School Safety and Security
9. Transportation
10. Associate Superintendent of Academic Services
11. Teacher Development
12. CTAE
13. Federal Programs
14. Professional Learning
15. Teaching & Learning
16. Information Technology
17. Assistant Superintendent of Elementary I Administrative Services
18. Assistant Superintendent of Elementary II Administrative Services
19. Assistant Superintendent of Middle School Administrative Services
20. Assistant Superintendent of High School Administrative Services
21. Assistant Superintendent of Student Support Services
22. GNETS
23. Special Education
24. Student Services
25. School Climate
26. Chief Financial Officer
27. Budget and Finance
28. School Nutrition
29. Interim Chief Human Resources
30. Human Resources Department

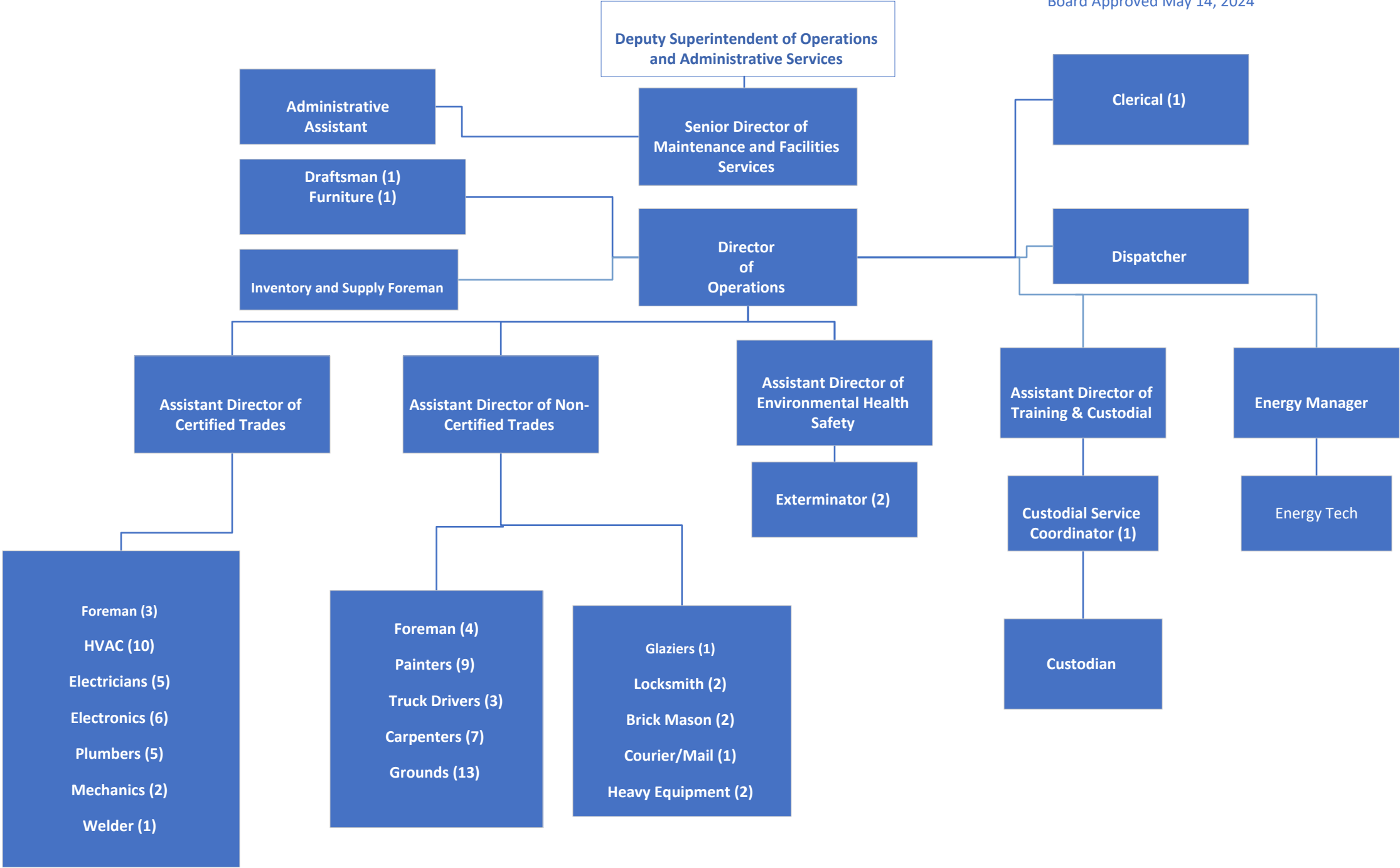


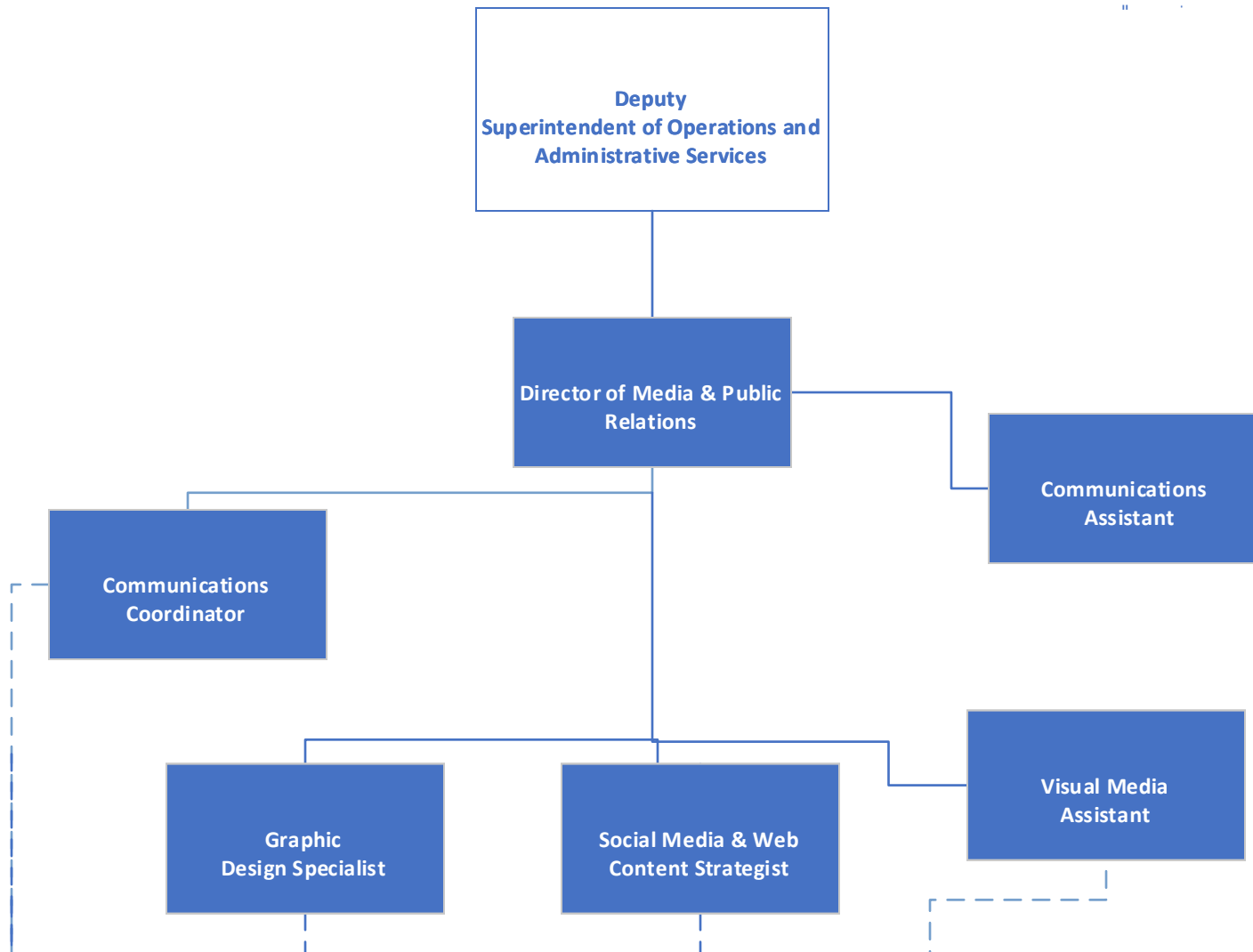


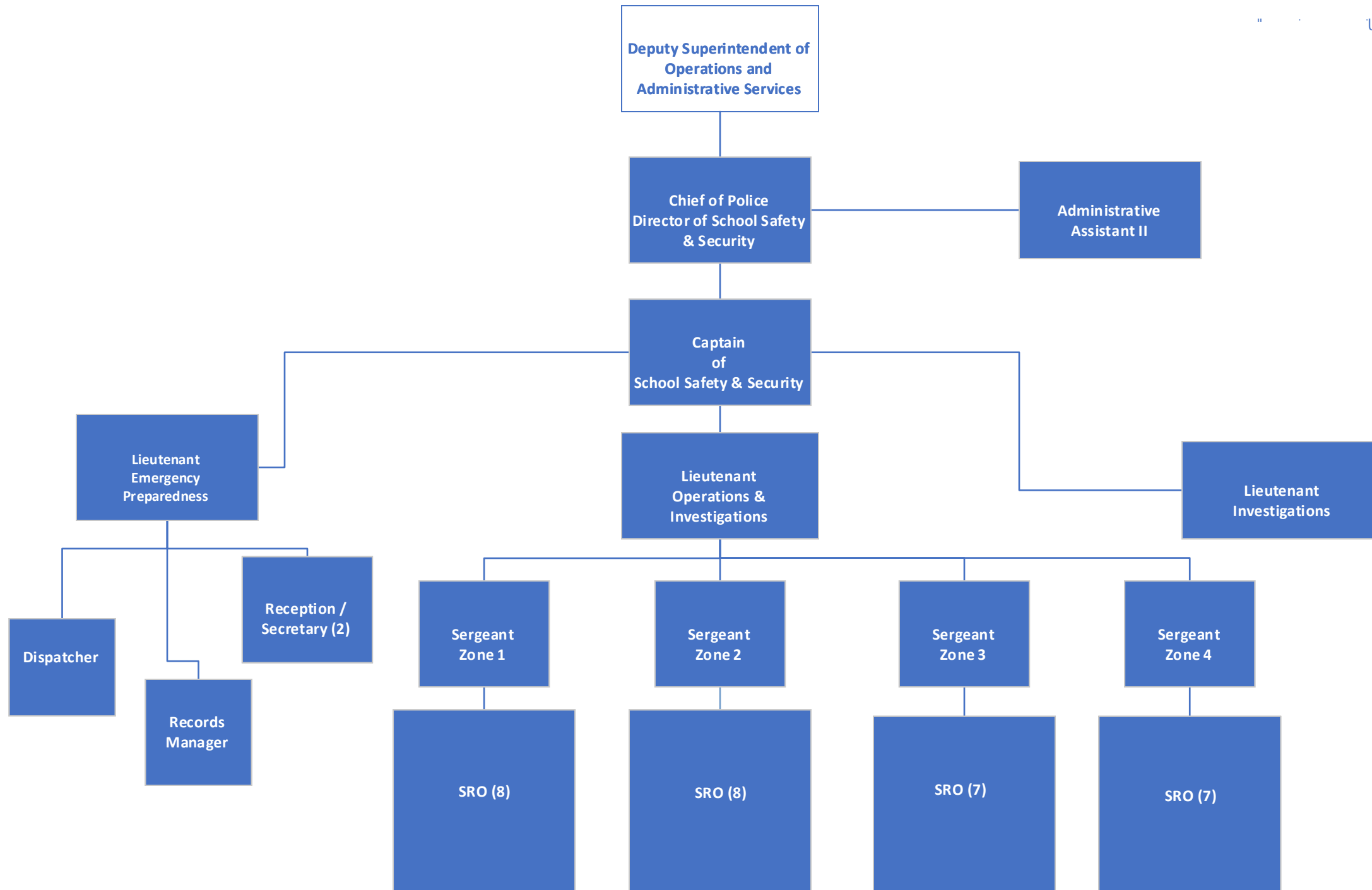


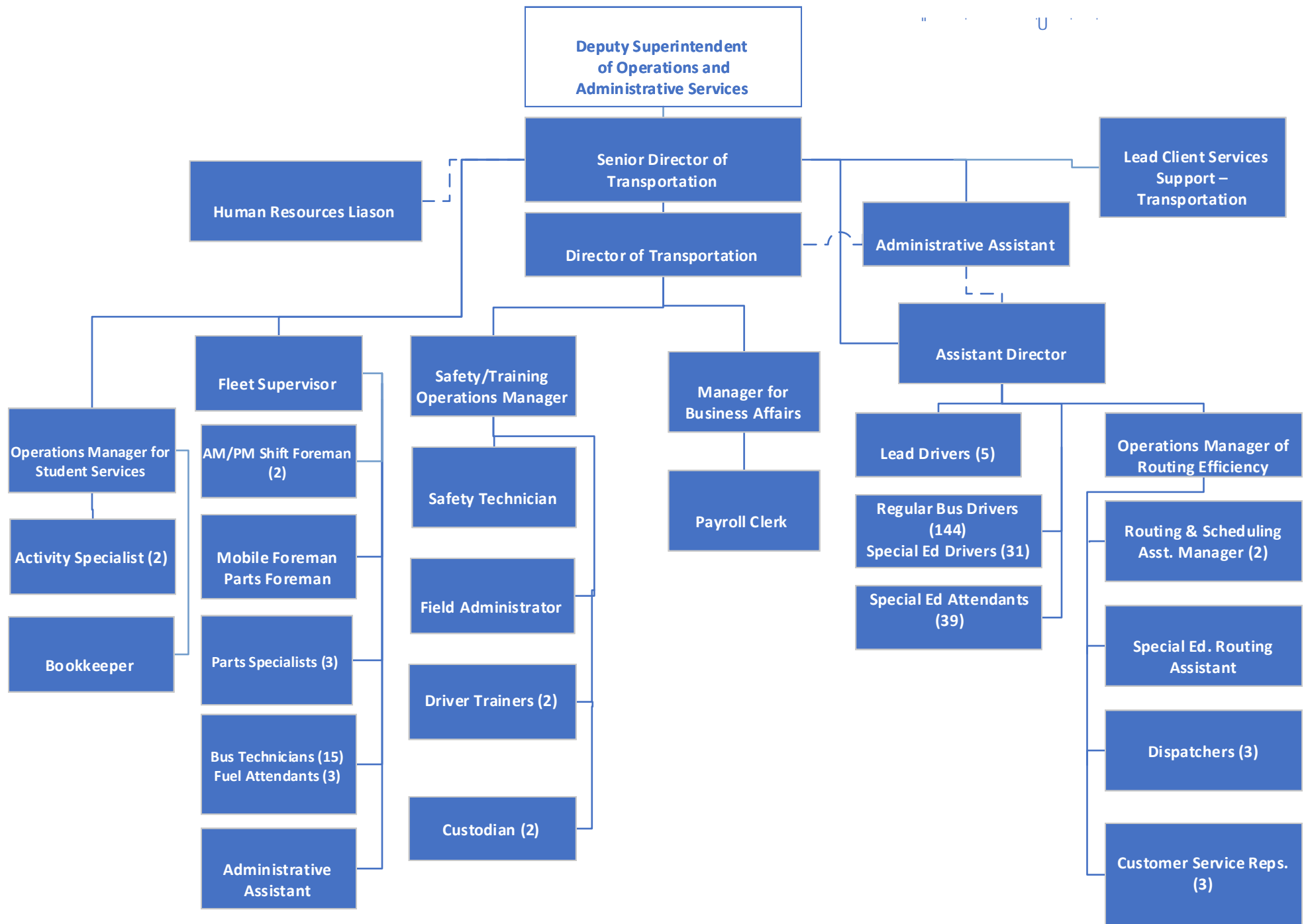


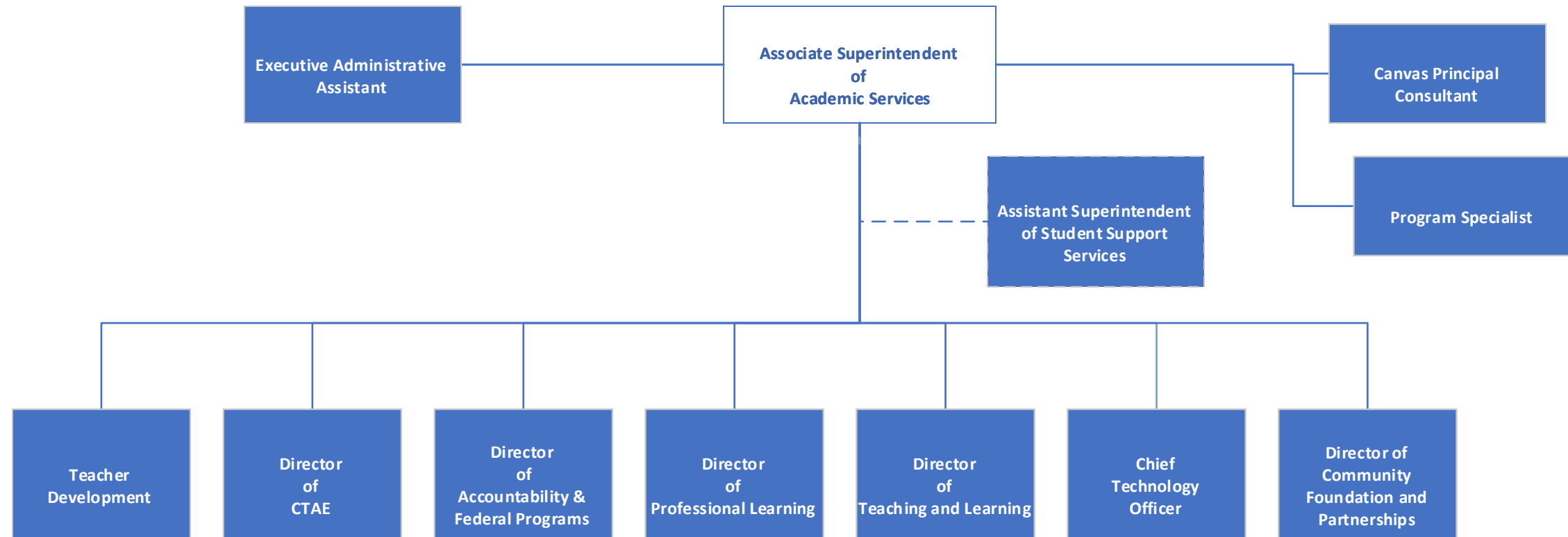


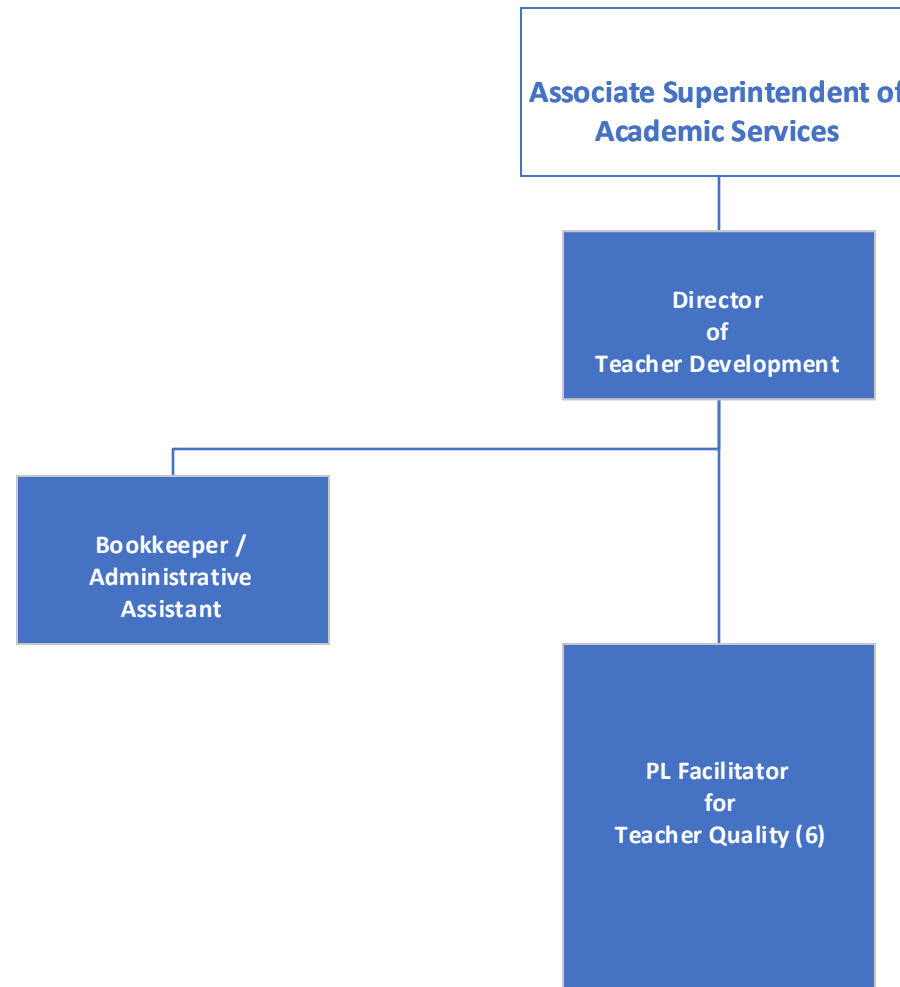


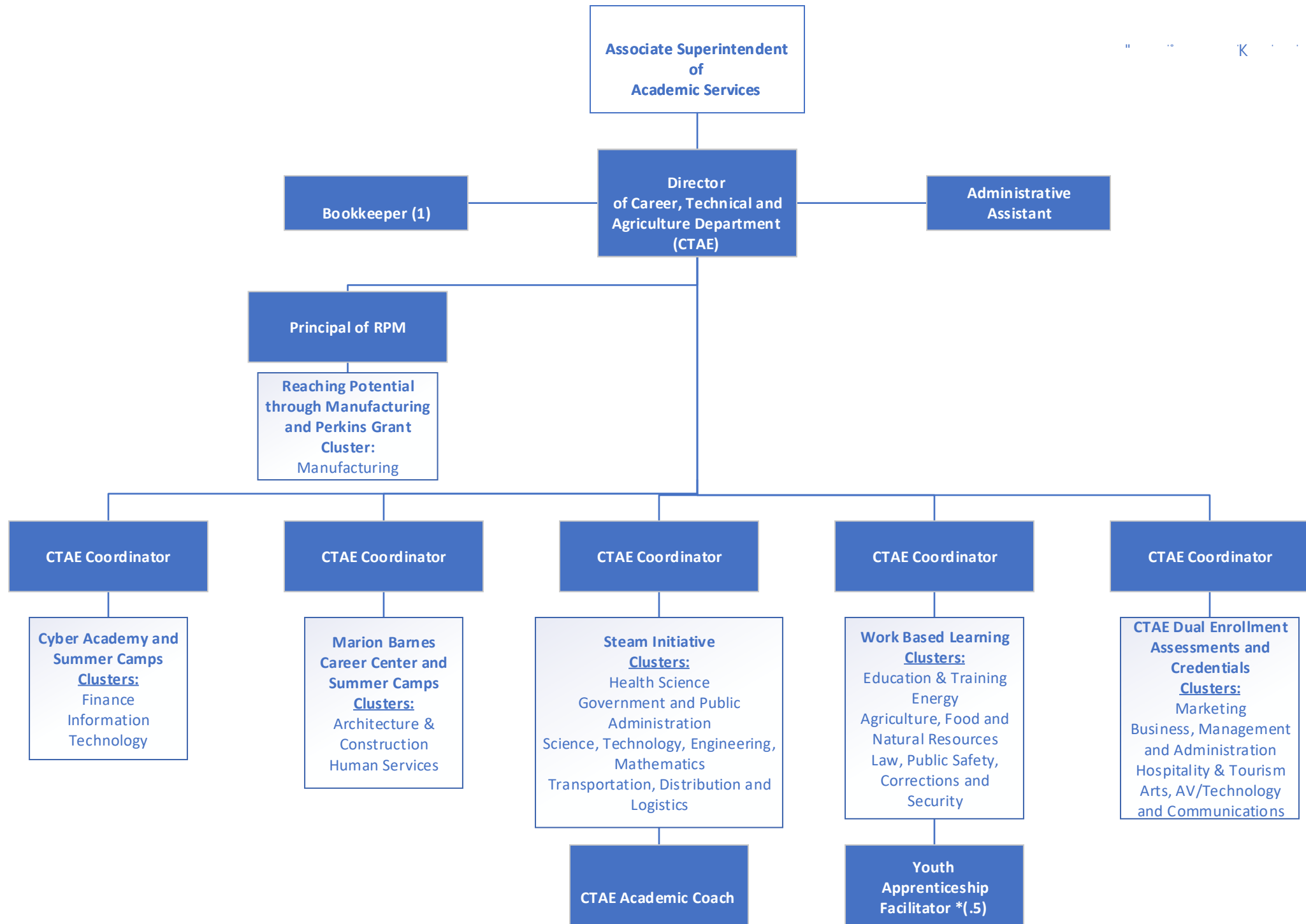


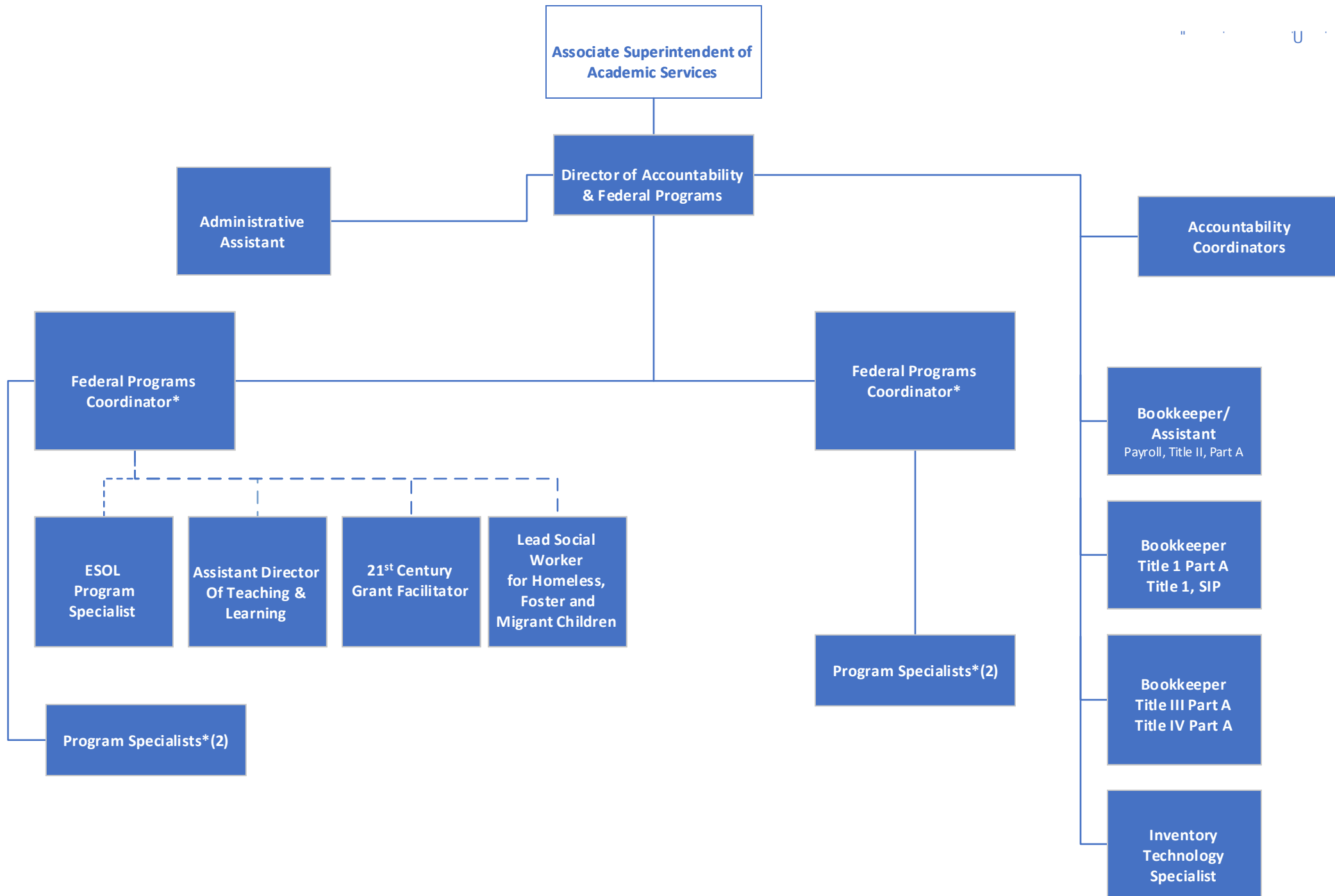


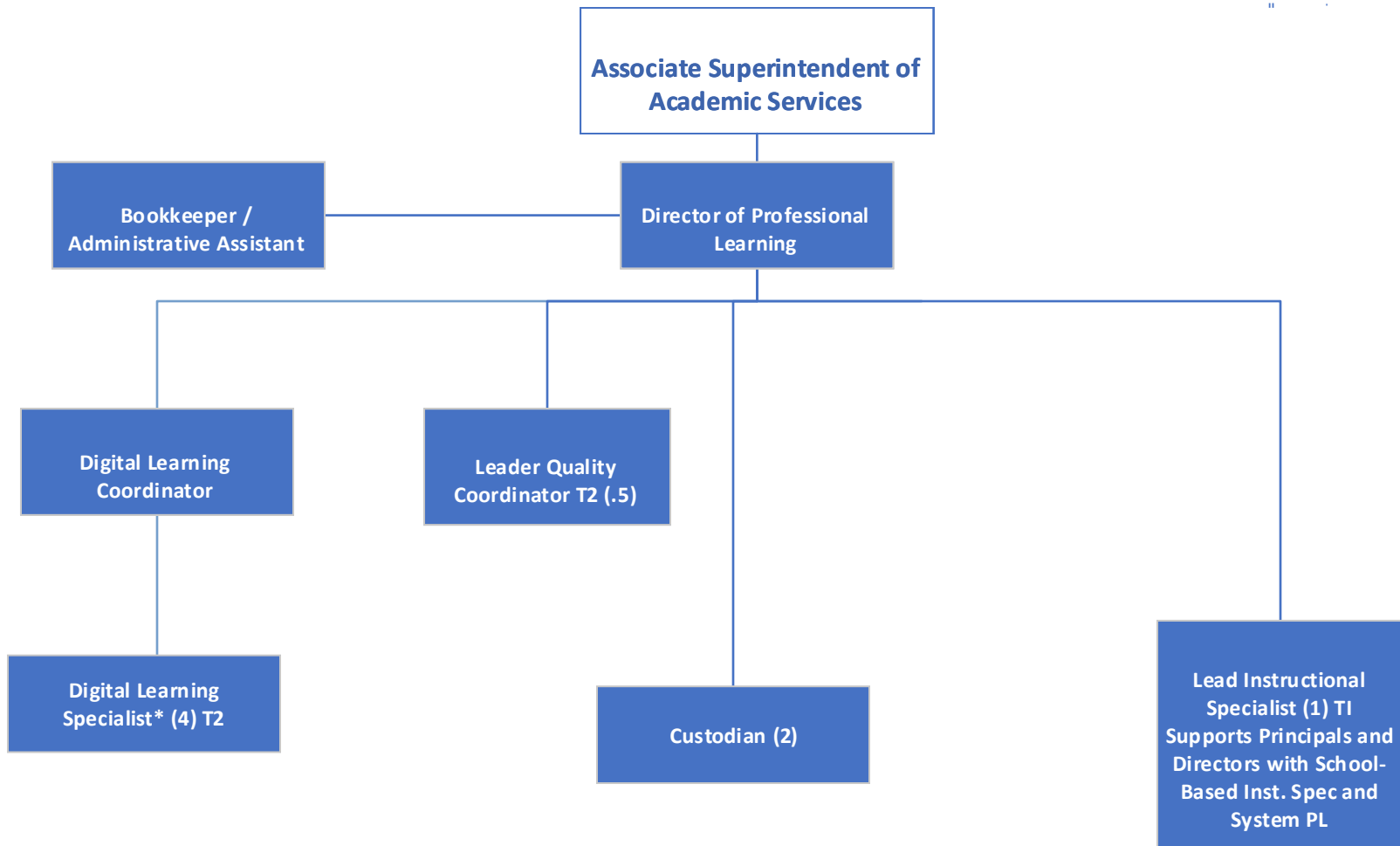


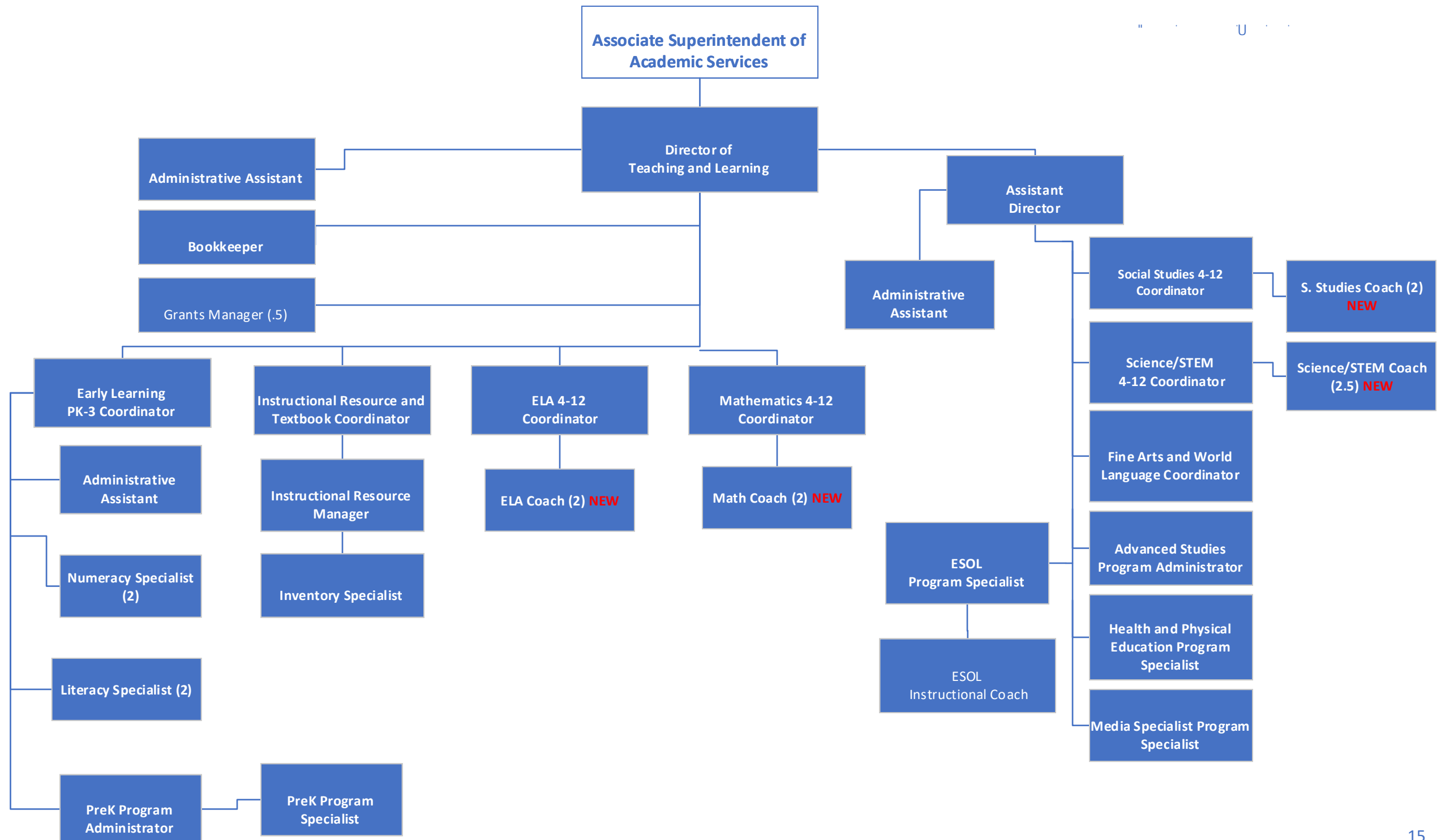


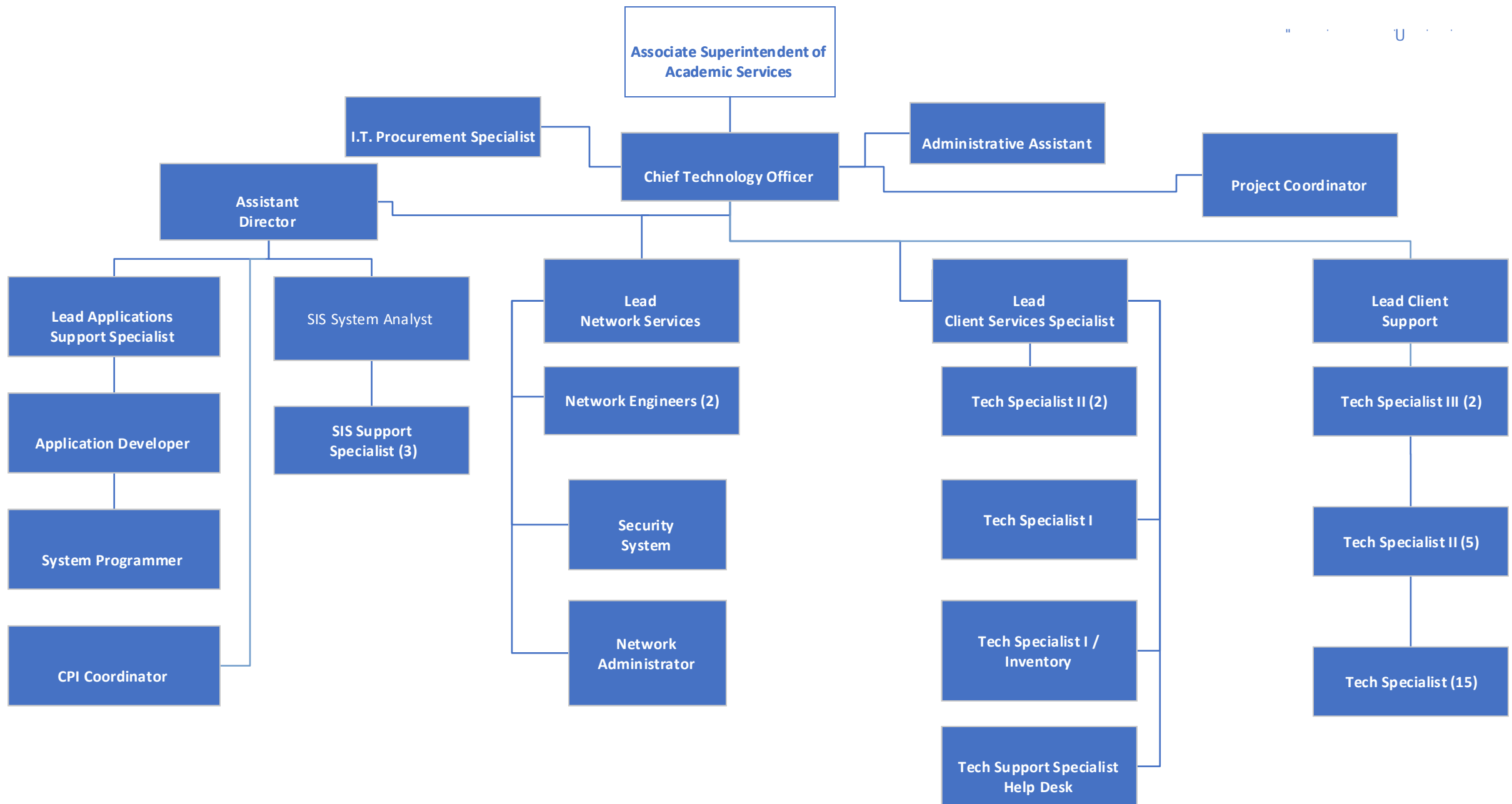


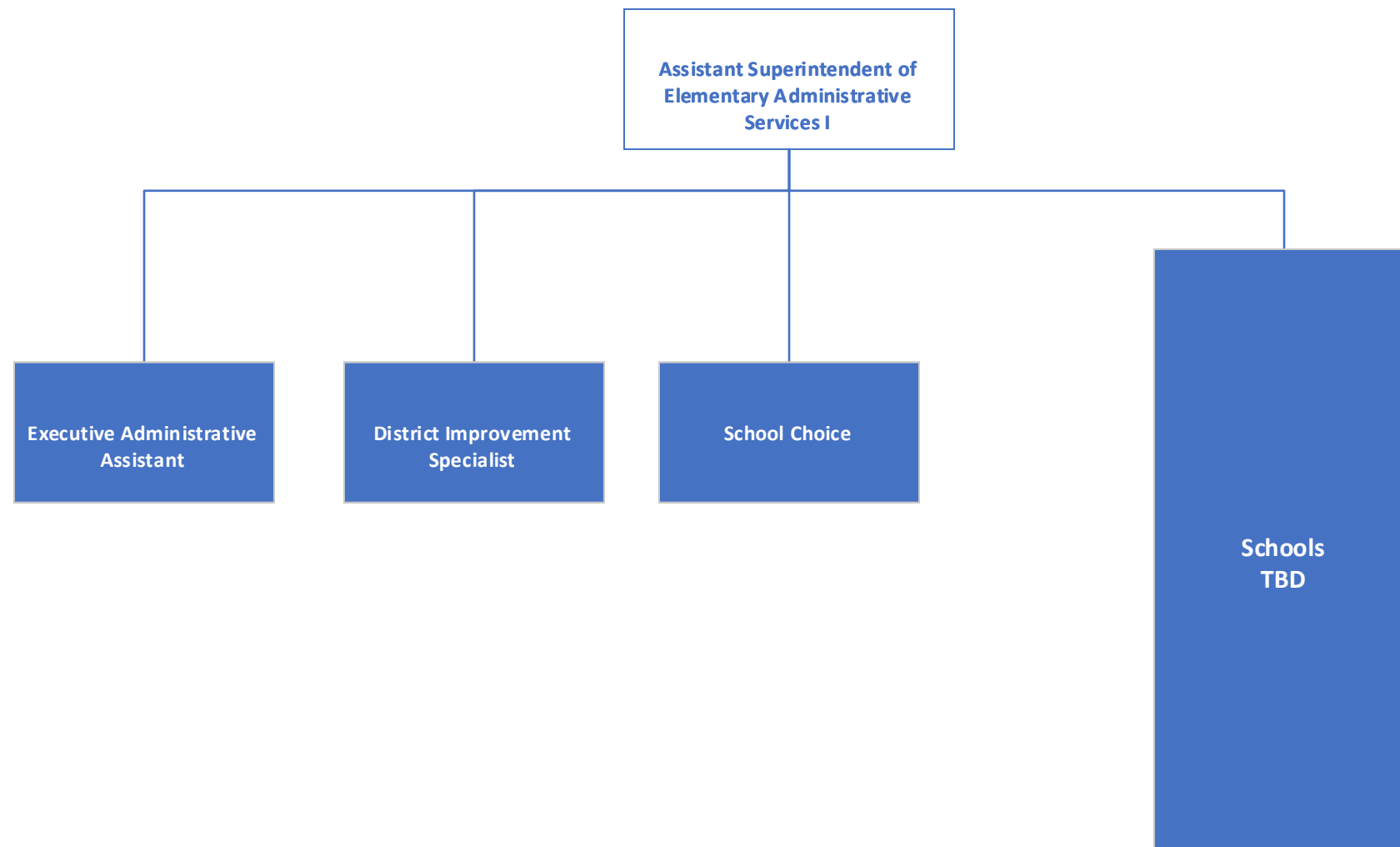


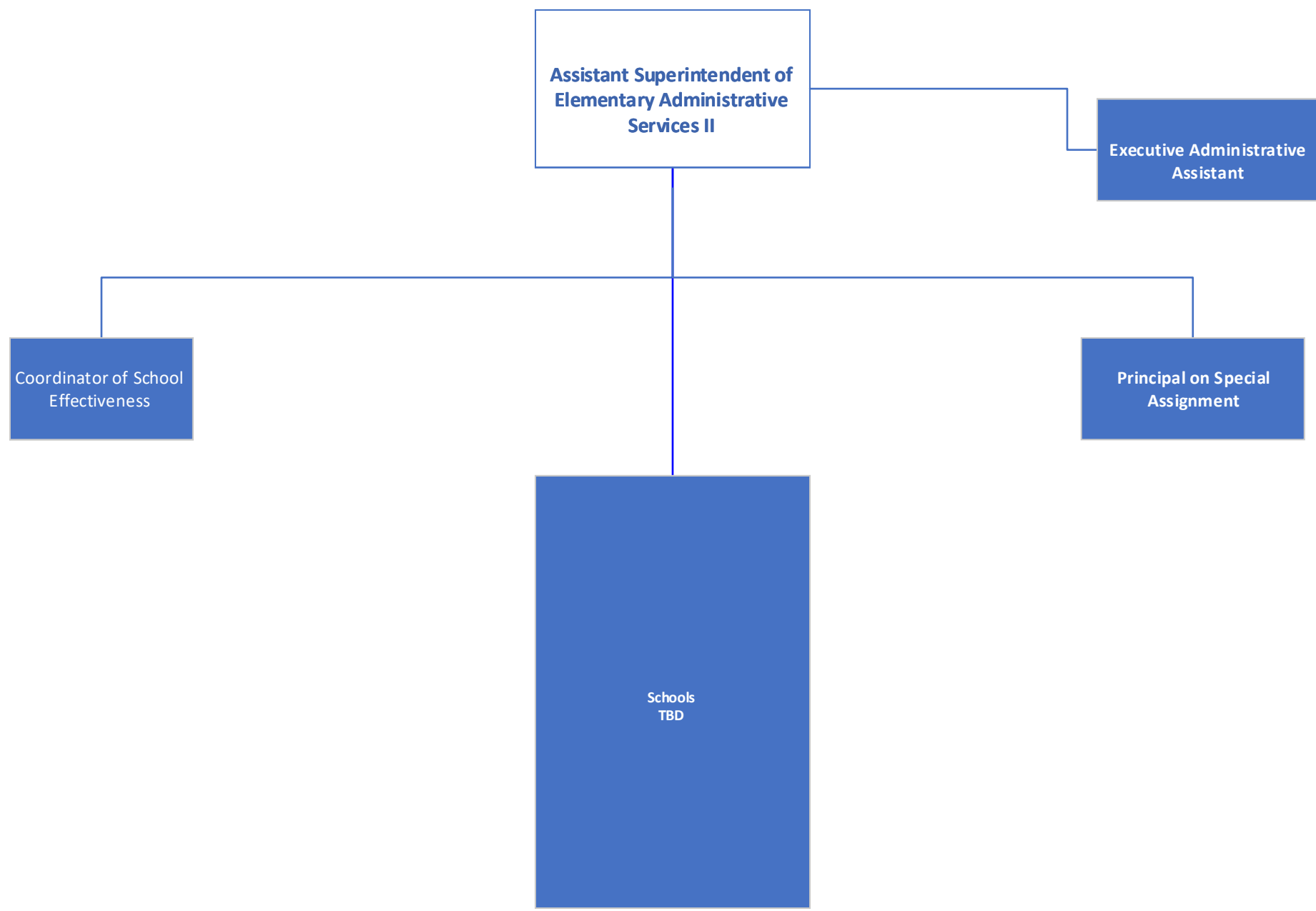


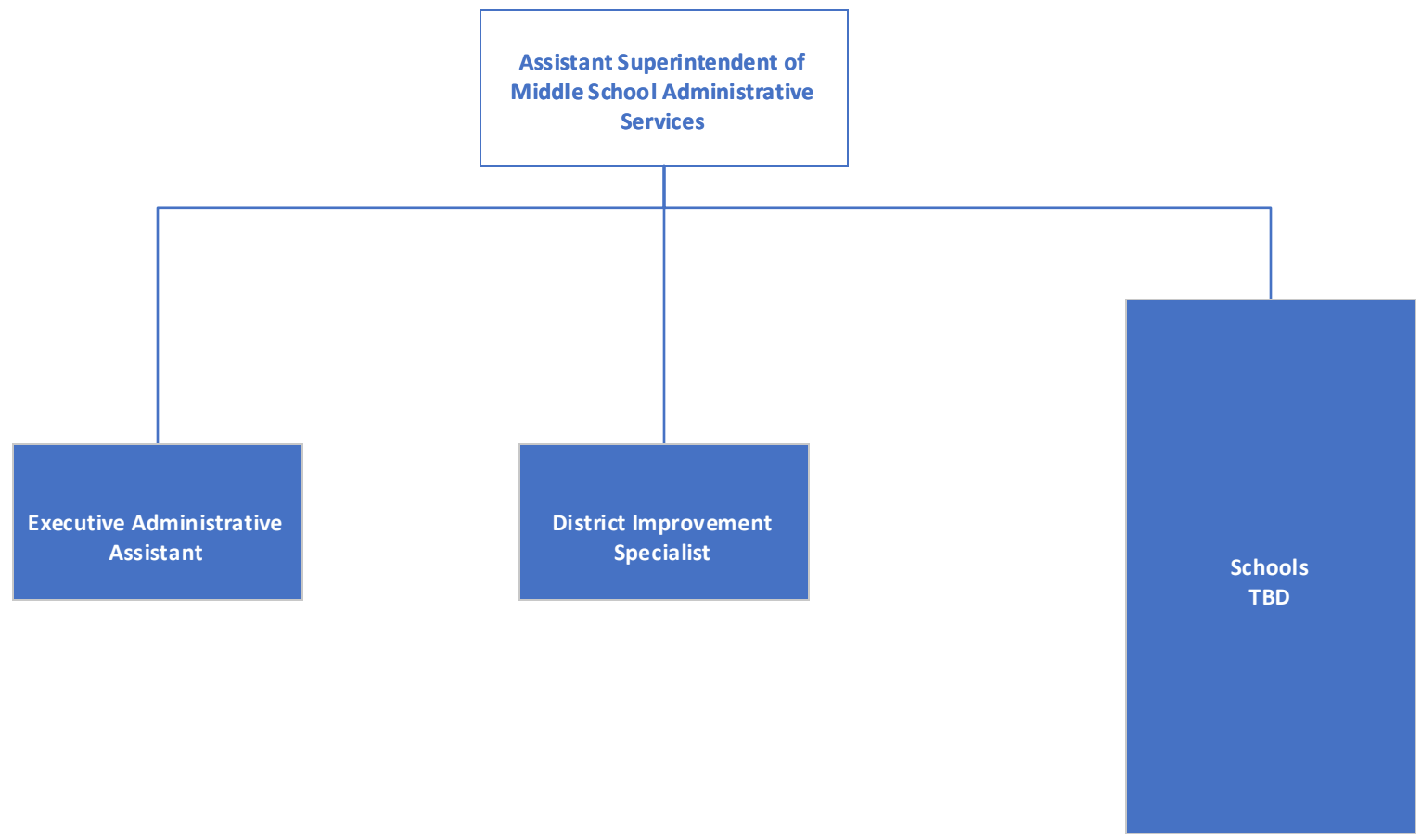


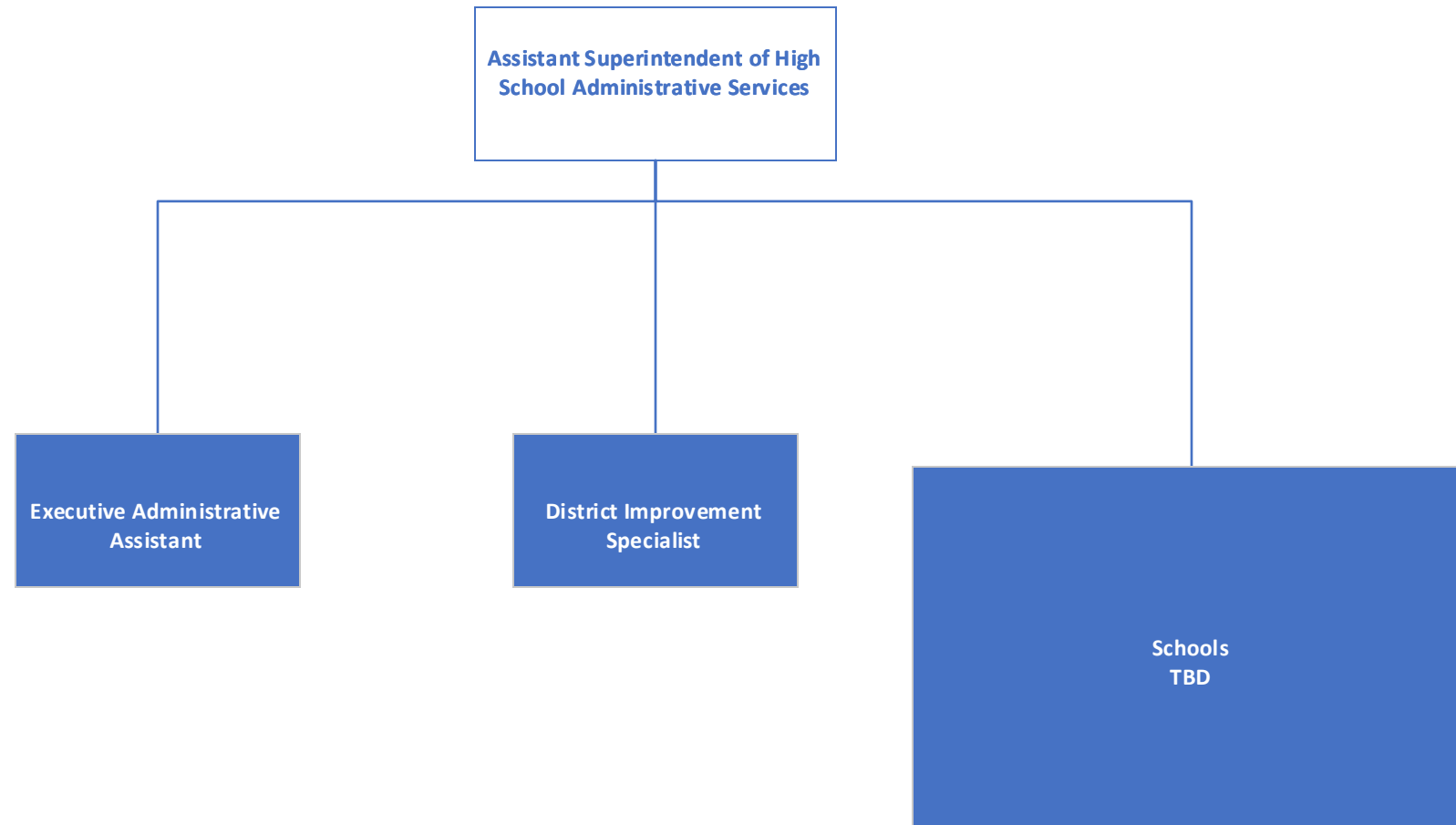


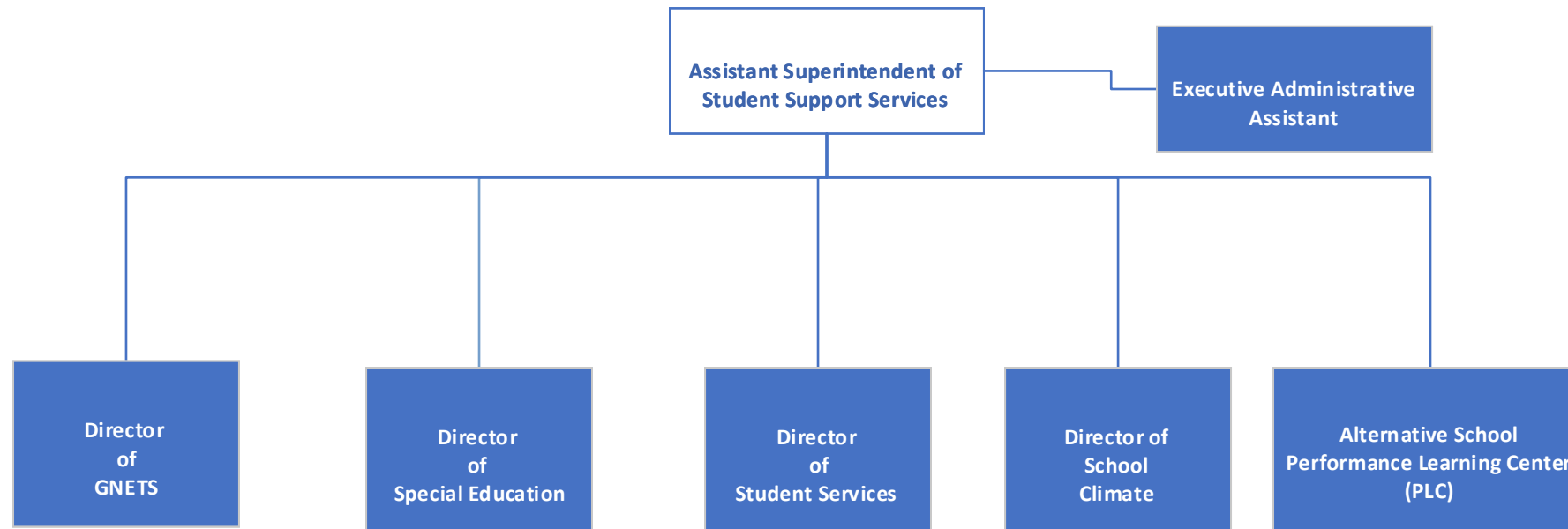


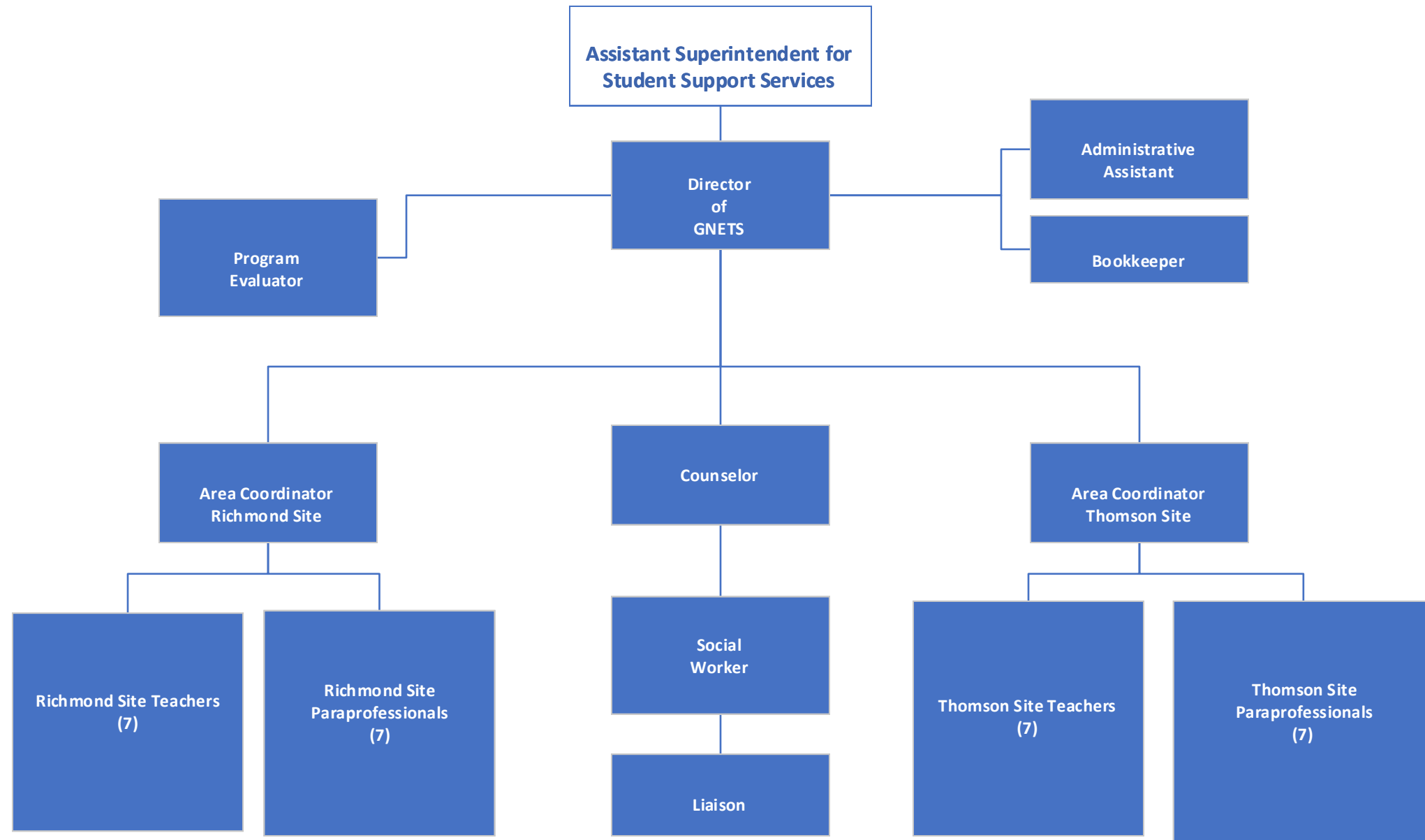


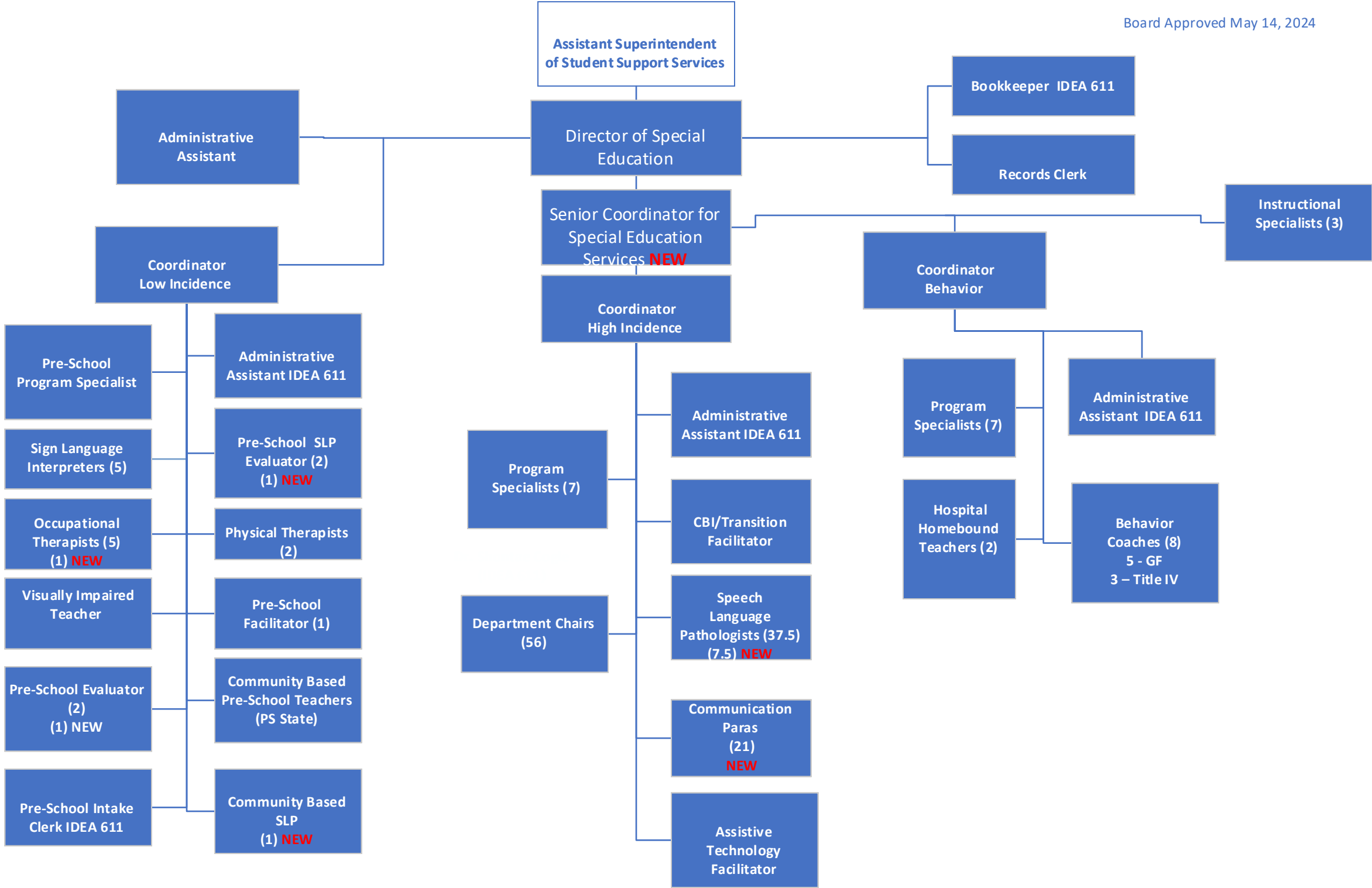












Assistant Superintendent of Student Support Services

Board Approved May 14, 2024

